

Critical Illness Benefit Payments

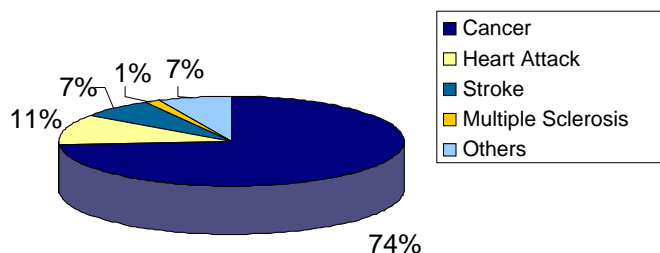
(September 2006)



More than \$6,000,000 in benefits has been paid!

Each insured was surprised that a critical illness happened to them.

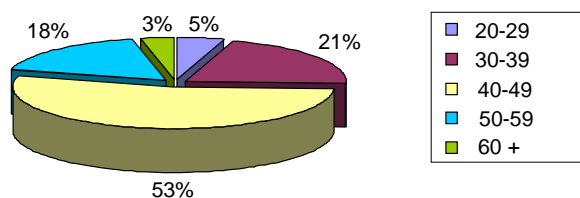
CI cases by condition/illness



For men only, the percentage of Heart Attack cases is higher than the above-mentioned. However, for women, it is the percentage of cancer cases that is higher than the above-mentioned.

Average Age of CI Beneficiary : 47 years old

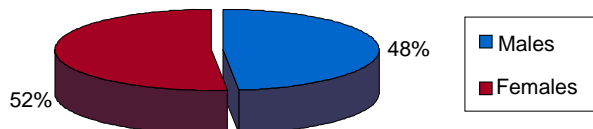
CI cases by age category



79 % of claimants are less than 50 years old

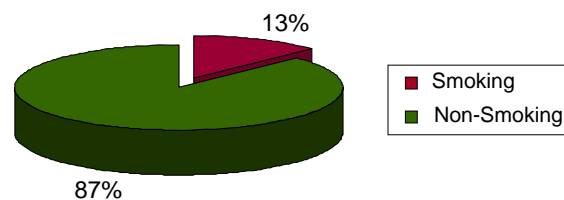
CI cases Males vs Females

Distribution of cases M/F



CI cases Smoking vs Non-Smoking

Distribution of cases S/NS



N.B. : These statistics are based on a small number of cases. They are subject to change with time.